

An abstract painting with thick, expressive brushstrokes in various colors including yellow, green, blue, red, and grey, set against a light beige background. The text is overlaid on this artwork.

# GALLERY CKTAILS






VERTICAL BLUE  
*Philip Diggle*

OUR PRIVATE  
COLLECTION OF  
CONTEMPORARY  
ART FEATURES  
COMPELLING PIECES  
FROM INCREDIBLE  
BRITISH ARTISTS  
AND INTERNATIONAL  
RISING STARS.

Within the Lobby Bar's inviting gallery atmosphere, our mixologist Roberto Di Paolo has collaborated with the pioneering cocktail creative Marcis Dzelzainis, to curate the most exquisite art-inspired cocktails.

Both the cocktails and the artworks are original and modern, and the depth and breadth of the curation may well surprise you...





LIKE THE ART,  
THE DRINKS  
EXPLORE THE  
CONNECTION  
BETWEEN  
NATURE AND  
ARTIST.

UNTITLED  
*Sandra Liccione*

5 | HORSERADISH MARTINI  
*inspired by The Boatman*

7 | BLUEBERRY ENZONI  
*inspired by Michel Foucault*

9 | ROSALIND  
*inspired by Dionysus*

11 | OLGA'S BRAMBLE  
*inspired by Girls Head*

13 | MORELLO CHERRY MAI TAI  
*inspired by Abstract in Colour*

15 | GINGER STONE FENCE  
*inspired by Abstract Figure Form in Blue*

17 | QUINCE & EARL GREY MARTINI  
*inspired by Lizzie*

19 | BREAKFAST BY THE LOCH  
*inspired by Toast*

21 | GARDEN SWIZZLE  
*inspired by Floral Border*

23 | RHUBARB SOUR 0%  
*inspired by Forms in Turquoise on Green*

25 | ICED TEA SPRITZ 0%  
*inspired by Untitled*

27 | CARROT FIZZ 0%  
*inspired by One Aldwych*

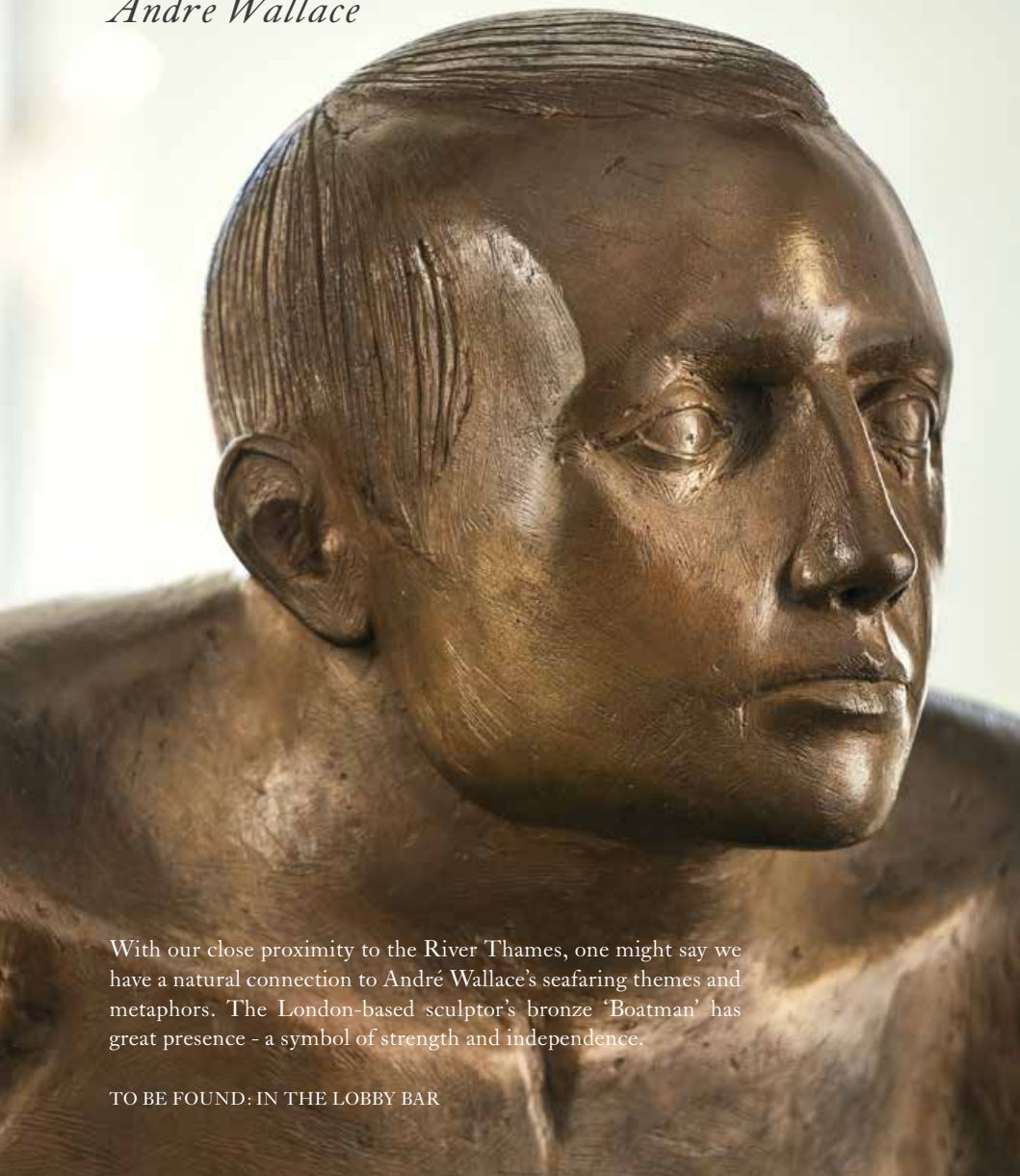
All prices are inclusive of VAT at the current rate.  
A discretionary service charge of 15% will be  
added to your bill.

Please let us know if you have any allergies or  
dietary requirements.



## THE BOATMAN

*André Wallace*



With our close proximity to the River Thames, one might say we have a natural connection to André Wallace's seafaring themes and metaphors. The London-based sculptor's bronze 'Boatman' has great presence - a symbol of strength and independence.

TO BE FOUND: IN THE LOBBY BAR



## HORSERADISH MARTINI

*Stately with quintessentially British flavours,  
strong and punchy.*



The Lakes Vodka | Horseradish Distillate | Vault Coastal Dry Vermouth  
Onion Pickle Juice

£24

Contains shellfish



## MICHEL FOUCAULT

*Philip Diggle*

Art meets punk! During the Punk movement, Philip Diggle would paint on stage at much-publicised gigs for his brother Steve Diggle, the guitarist and vocalist in punk band Buzzcocks. The direct outcome of intense and immediate physical actions and reactions, piling on and rubbing away paint, Diggle's instinctive style gave him a counter-culture slant, much like his Punk sidekicks.

TO BE FOUND: IN THE LOBBY BAR



## BLUEBERRY ENZONI

*Irreverent and fun. Floral and fruit driven with a hint of bitterness.*

☐ Beefeater 24 Gin | Campari | Capreolus Raspberry Eau de Vie | Blueberry | Lemon  
£20



## DIONYSUS

*Emily Young*



Known as the Greek God of Wine & Chaos, this striking stone Dionysus was carved from Purbeck limestone by Emily Young; described by The Financial Times as “Britain’s greatest contemporary stone sculptor”. With an endless curiosity in the unique geological characteristics of stone, Young’s work marries the frailty of human life with the unyielding magnificence of stone.

TO BE FOUND: NEAR TO RECEPTION



## ROSALIND

*The embodiment of Bacchanalia.*

 Sapling Vodka | Aker English Rosé Aperitif | Capreolus Raspberry Eau de Vie  
Vault Aperitivo Bitter | Grapefruit | Henners English Sparkling Wine

£24



## GIRLS HEAD

*André Wallace*



Known affectionately in the hotel as Olga, this piece connects the architectural and artistic forms of the period when the hotel was originally built in 1905. André Wallace often focuses on human figures to explore broad themes of transformation, journeys and the passage of time. The materials he uses are suggestive of different states – in this instance a simplicity and solidity represented by the traditional bronze cast.

TO BE FOUND: IN THE LIBRARY



## OLGA'S BRAMBLE

*Minimalist, pared back to its essence. A drink that highlights the beauty of three ingredients.*

 Plymouth Gin | Capreolus Blackberry Eau de Vie | Lemon

£22



## ABSTRACT IN COLOUR

*Brian De La Cour*

The source of Brian De La Cour's inspiration is landscape in many forms. His early work, self-defined as 'tortuous' in nature, led him to explore the juxtaposition of natural rock formations with urban scenes of devastation. His later art reflects the calmer harmony of land and sky, though still through a lens of abstract realism. De La Cour's paintings are often constructed through layering; revealing, cancelling and superimposing images, free-hand drawing and lively colour, representing both stability and flux, in art and in life.

TO BE FOUND: IN ONE OF OUR BEDROOMS



## MORELLO CHERRY MAI TAI

*A British Tiki drink, with one foot in the Caribbean the other in the West Country.*

☐ Havana Club 7 Rum | Plantation Overproof Rum | Somerset Morello Cherry Liqueur  
☐ Somerset Pomona Liqueur | Almond | Lemon

£20



## ABSTRACT FIGURE FORM IN BLUE

*Joost Beerents*

One Aldwych owns a number of specially commissioned pieces by Amsterdam-based artist Joost Beerents as part of our permanent collection. At the start of her career, Beerents was influenced by Fra Angelico's frescoes - 'their worn, pale colours' - in Piazzo San Marco in Florence. Much of her work shows her experiments with charcoal and gouache as she developed her own techniques and style.

TO BE FOUND: ON THE SIXTH FLOOR



## GINGER STONE FENCE

*Known in the trade as a bracer, this is a punchy libation with a kick.*

🍷 Maker's Mark Bourbon | Capreolus Pear Eau de Vie | Howl & Loer #1  
🍹 Ginger | Perry Cider | Angostura Bitters | Lemon

£20



# LIZZIE

*Justine Smith*



Our original canine sculpture Spencer was more recently joined by puppy friend Lizzie. Both sculptures embody Justine Smith's preoccupation with paper. With Lizzie, Smith subverts the concept of money - its worth and its status - with the fact that on a physical level a banknote is just a piece of paper.

TO BE FOUND: IN INDIGO



## QUINCE & EARL GREY MARTINI

*Bright, floral and fresh. The bergamot from the Earl Grey is livened by the addition of honey.*

🍷 Hendrick's Gin | Earl Grey Distillate | Capreolus Quince Eau de Vie  
Honey | Lemon

£24



# TOAST

*Tracy Davidson*


Suspended in wax, Toast was created by Tracy Davidson as an homage to the strength of her mother. This highly personal creative expression explores her deepest emotions from her teenage years when her father was in and out of prison and her mother often ate toast for breakfast, lunch and dinner to enable her to feed her children.

TO BE FOUND: IN INDIGO



## BREAKFAST BY THE LOCH

*Elegant smoke paired with a touch of caramel and blackberry.*

 The Macallan Double Cask 12 Years | Laphroaig 10 Years  
Capreolus Blackberry Eau de Vie | Golden Syrup | Orange Bitters  
£26



## FLORAL BORDER

*Richard Bartle*


Many of the ideas reflected in Richard Bartle's work explore individualism – particularly identity and lifestyle as commodities. In his art, Bartle seeks out perfect versions of the objects he needs, multiplies them, then painstakingly cuts them out and fixes them as patterns in his imagined worlds.

TO BE FOUND: ON THE FIFTH FLOOR



## GARDEN SWIZZLE

*Herbaceous, fresh and spicy. A long, complex and refreshing drink.*

 Olmeca Tequila | Somerset Pomona | Green Chartreuse | Cucumber | Tarragon  
Green Jalapeño | Purple Basil | Lime

£22



# FORMS IN TURQUOISE ON GREEN

*John Taylor*

Having grown up in Darvel, Ayrshire, Scotsman John Taylor began his artistic journey in 1959 with a Diploma of Art in Drawing and Painting at the renowned Glasgow School of Art. He later developed his passion for screen printing studying in Birmingham in the seventies.

TO BE FOUND: IN ONE OF OUR BEDROOMS



## RHUBARB SOUR 0%

*Elegant, refreshing and refined with a touch of tang.*

Everleaf Mountain | Everleaf Marine | Rhubarb | Almond  
Franklin & Sons Soda Water | Lemon

£14



# UNTITLED

*Wendy Sutherland*

Wendy Sutherland encourages us to stride out in her company towards an inviting horizon. Her paintings celebrate the dominating physical environments of her upbringing, the elements experienced and embraced on long walks and, more deeply, the primal energy which formed these hills, landscapes and seas.

TO BE FOUND: ON THE FOURTH FLOOR



## ICED TEA SPRITZ 0%

*Exploring the elements with the flavours of nature.*

🍷 Everleaf Forest | Bergamot Cordial | Earl Grey Tea | Prosecco Zero | Bergamot Foam  
£14



# ONE ALDWYCH

*Joost Beerents*



This specially commissioned piece from Joost Beerents is a celebration of our singular, beautiful building. Stepping into our lobby is to step into a moment in history, dressed up in style. Built in 1905 as the home of the Morning Post newspaper, we like to think it still inspires conversation and connection.

TO BE FOUND: ON THE SIXTH FLOOR



## CARROT FIZZ 0%

*Distinctive and structured with an invigorating freshness.*



Lyre's Italian Spritz | Carrot Cordial | Orange | Ginger | Lemon | Prosecco Zero

£14





# BE PART OF THE ART

MULTI COLOURD FORMS – YELLOW

*Lorraine Stokes*





CO

ONEALDWYCH